

Glass Flotation Modules

G2200

G6600

G8800

Features and Benefits of McLane Glass Flotation Modules

Description: Ocean-depth rated 12” borosilicate glass spheres in polyethylene protective hard hats. Positive buoyancy ratings are: **G2200** (single sphere) **10 kg/22 lbs**, **G6600** (triple sphere) **30 kg/66 lbs**, and **G8800** (quad sphere) **40 kg/88 lbs**. Multiple units can also be assembled in modular, through-center systems connected by a center rod to provide compact buoyancy concentrations.



- ❖ Through-center assembly **reduces mooring drag**.
- ❖ G6600 is **18% more buoyant** than a 17” sphere at (25.4 kg/56 lbs).
- ❖ Each sphere is **individually tested to 7,000 meters** (10,000 psi).
- ❖ **Cost effective** alternative to other flotation solutions.

Through-center systems: G6600 and G8800 units can be assembled in axis symmetric, through-center systems connected by a center rod. Locking pins or rods secure the hard hats and prevent independent rotation within a module. This assembly turns with the current direction and eliminates cable twist for more stable, reliable mooring performance.

Fabrication process: McLane’s stringent fabrication process makes long-lasting spheres of the highest quality. Glass hemispheres are meticulously inspected and equators precisely ground and matched for an ultra-smooth, tight seal. Assembled spheres are closed with a vacuum-seal.

Glass Flotation Specifications

Model: G2200

Description: One - 12" glass sphere w/ hard hat housing

Buoyancy: 22 lbs. (10 kg.)

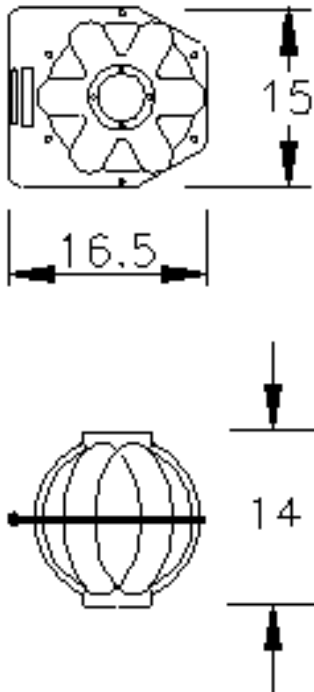
Dimensions: 15 x 16.5 x 14 in.
(38 x 42 x 35.5 cm.)

Depth Rating: ~ 23,000 ft. (7,000 m.)

Weight-in-Air: 14 lbs. (6 kg.)

Test: ~ 10,000 psi (7,000 m)

Other: Conventional flange mount hard hat.



Model: G6600

Description: Three - 12" glass spheres w/ hard hat housing

Buoyancy: 66 lbs. (30 kg.)

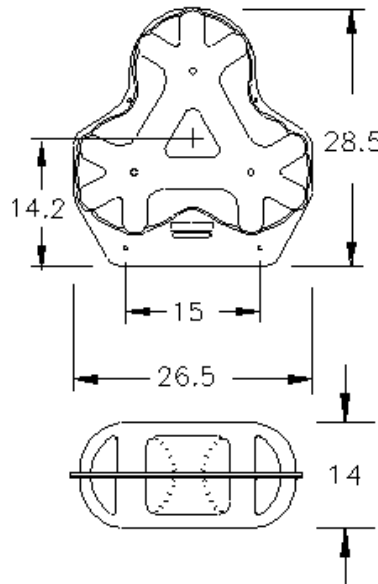
Dimensions: 26.5 x 28.5 x 14 in.
(67 x 72 x 35.5 cm.)

Depth Rating: ~ 23,000 ft. (7,000 m.)

Weight-in-Air: 46 lbs. (21 kg.)

Test: ~ 10,000 psi (7,000 m)

Other: Through-center assembly mounting hardware available to stack two or three units.



Model: G8800

Description: Four - 12" glass spheres w/ hard hat housing

Buoyancy: 88 lbs. (40 kg.)

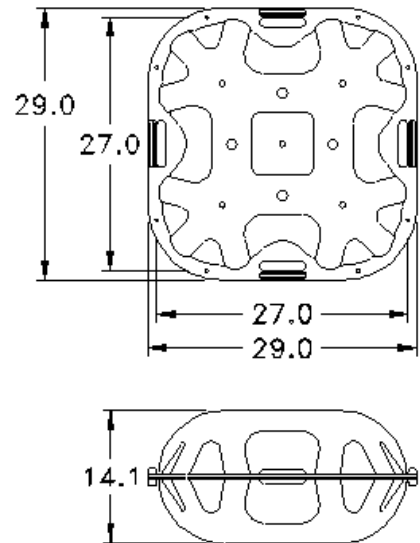
Dimensions: 29 x 29 x 14 in.
(74 x 74 x 35.5 cm.)

Depth Rating: ~ 23,000 ft. (7,000 m.)

Weight-in-Air: 66 lbs (30 kg.)

Test: ~ 10,000 psi (7,000 m)

Other: Through-center assembly mounting hardware available to stack two units.



Schematic dimensions shown above are inches

Specifications Subject to Change without Notice



Falmouth Technology Park
121 Bernard Saint Jean Drive
East Falmouth, MA 02536

Tel: 508.495.4000
Fax: 508.495.3333
Web: www.mclanelabs.com

03/05

Pioneers of Time-Series Oceanographic and Environmental Instrumentation since 1983